

LOADSLAMMER
TRUST AND VERIFY

LSP200 PRO

Product Overview



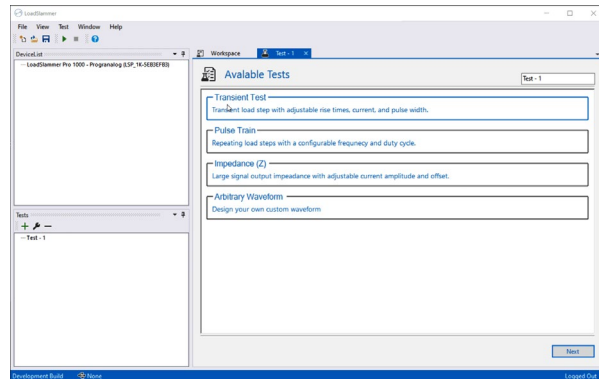
Next Generation Transient Load Test Tool

www.loadslammer.com

Application Uses

- DC-DC Point of Load Transient Testing
- Multi Phase Testing
- Large Signal Stability Analysis
- Motherboard Verification
- DC-DC Firmware Validation
- CPU, GPU, TPU, FPGA
- Datacenter, Telecom, Storage, Servers, Video Routers

Comprehensive Features - Easy to Use



Software Options

- Auto Phase Stress Testing
- Large Signal Impedance Analysis up to 5MHz
- Real Time Oscilloscope



Key Features

- 100A DC Pulse Loading, 100mA steps
- 200A/us Slew Rate
- Programmable Slew Rate
- Scalable, add up to 10 in parallel
- Arbitrary Impedance Waveform Generator
- Integrated 4D testing, frequency, duty cycle, current
- Vendor Specific Test Suites
- Interposer and Adaptor compatible
- Expansion Port for additional functionality

